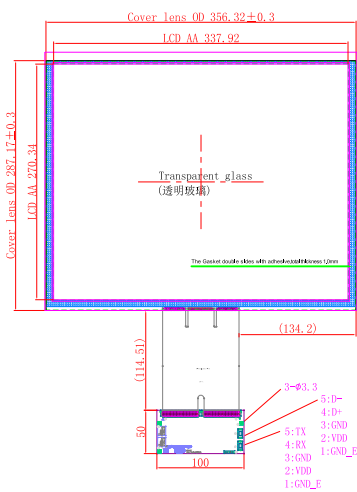
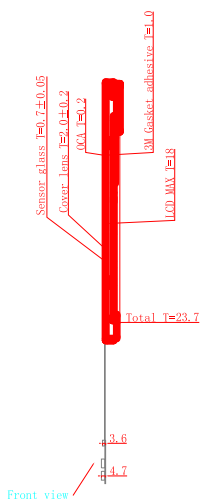


版本	标识	修改内容	修改日期	签名

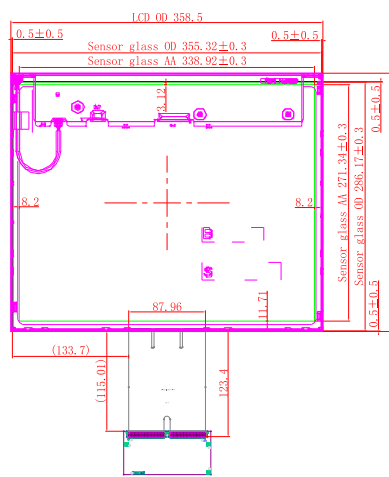
Front view



Side view



Back view



Technical Parameters

- 0: Interface :USB
- 1: Touch point: 10
- 2: Cover lens + Sensor glass + OCA + FPC
- 3: Cover lens Thickness = 2.0mm
- 4: Sensor glass Thickness = 0.7mm
- 5: OCA Thickness = 0.2mm
- 6: Total Thickness = 2.9mm
- 7: Sensor Process: Print Process (ITO Pattern) + laser line(Ag)
- 8: Input Voltage 3.5V~5.5V, Typical 5V
- 9: Transmittance:>85%
- 10: Surface Hardness:>6H
- 11: Relative Humidity:95% at 60°C, RH Non-condensing
- 12: Dimension tolerance:±0.2mm

JFCVISION		JFC INDUSTRIAL CO.,LTD			
Draw	CIndy.deng	2018.07.09	Materials	Glass	EG-17-074-V1
Check			Scale	1:1	G170ETN01.0
Approv	sim		Units	mm	Name 17 CTP+LCD
Page1/1					No. JFC170CMYY.V0